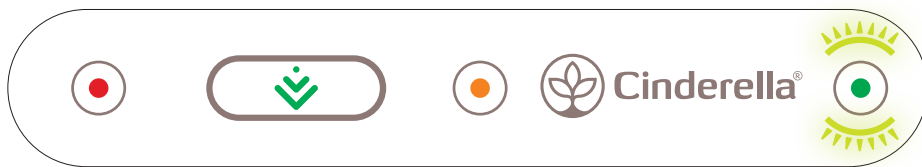


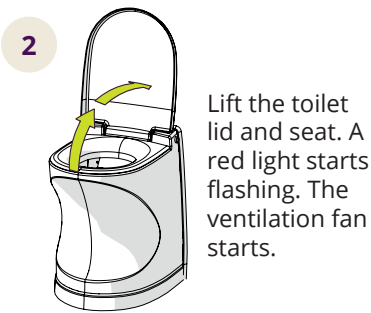


Cinderella[®]
Incineration Toilets

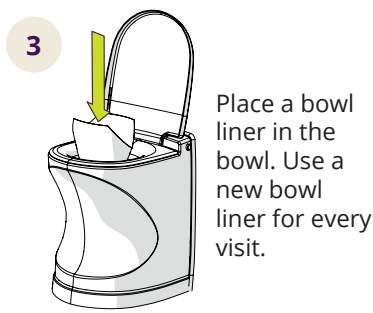
USING THE CINDERELLA TOILET



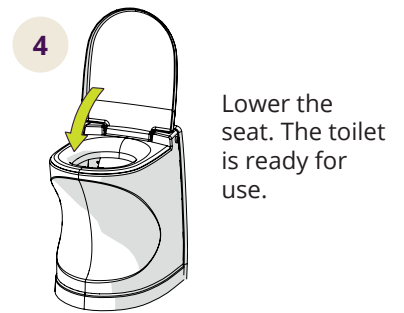
1 Check that the green light on the control panel is lit, indicating the unit is powered and ready for use.



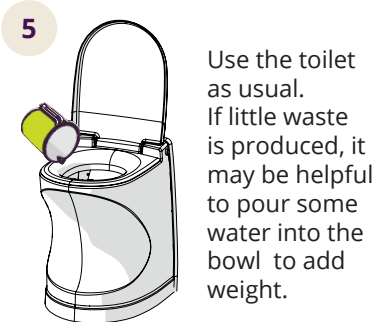
2 Lift the toilet lid and seat. A red light starts flashing. The ventilation fan starts.



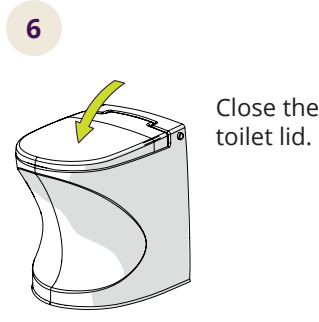
3 Place a bowl liner in the bowl. Use a new bowl liner for every visit.



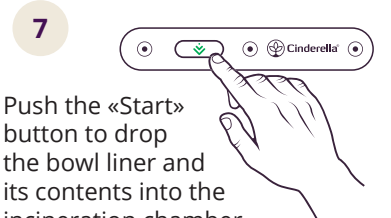
4 Lower the seat. The toilet is ready for use.



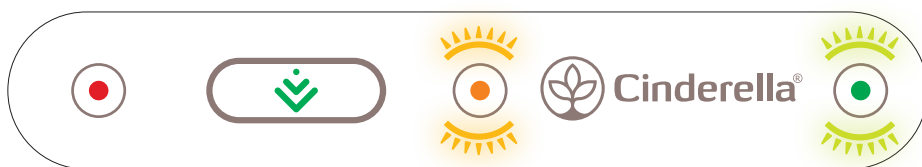
5 Use the toilet as usual. If little waste is produced, it may be helpful to pour some water into the bowl to add weight.



6 Close the toilet lid.



7 Push the «Start» button to drop the bowl liner and its contents into the incineration chamber. Incineration begins as soon as the hatch is closed. The toilet is now ready for the next user.



8 A constant yellow light will display during active incineration. The toilet may be used at any point. This will temporarily interrupt incineration. Incineration time may vary based on the number of visits and amount of waste.

 Made in Norway